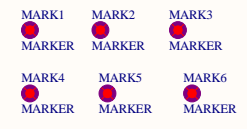
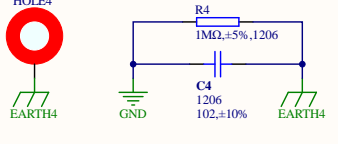
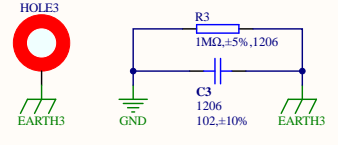
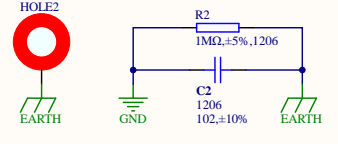
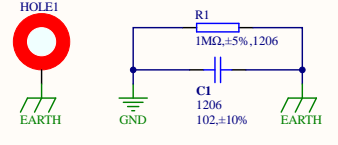
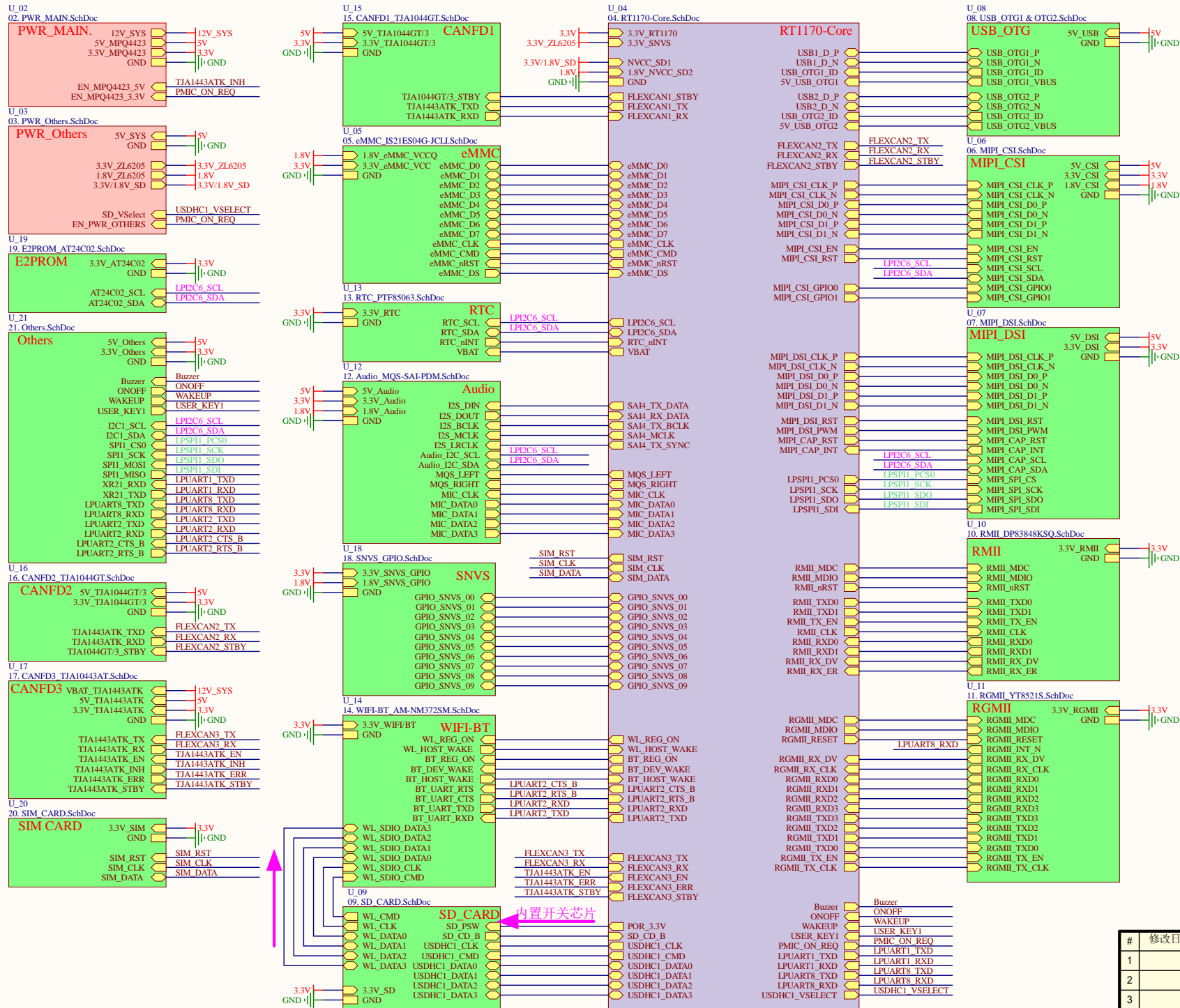
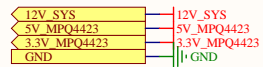


1.<图纸名称>



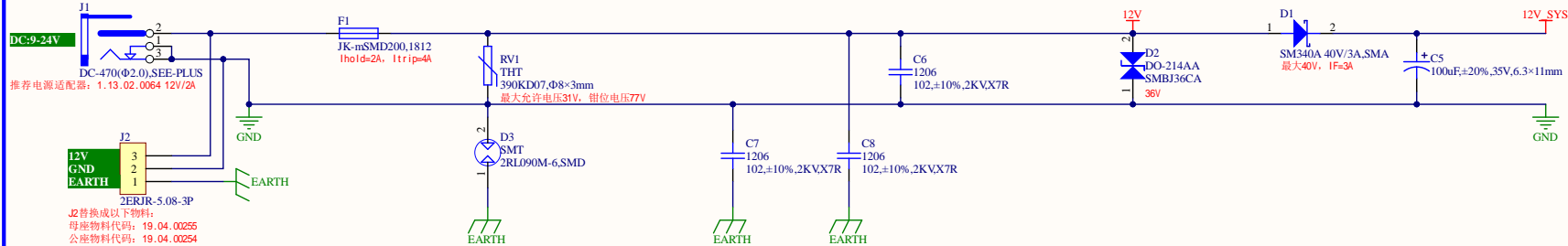
#	修改日期	修改内容
1		
2		
3		

2.<图纸名称>

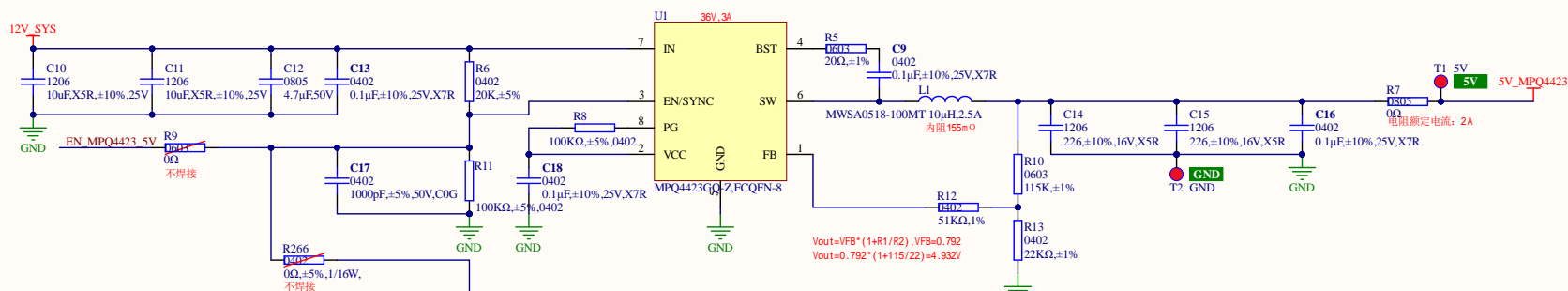


(2-1) 电源前端保护电路

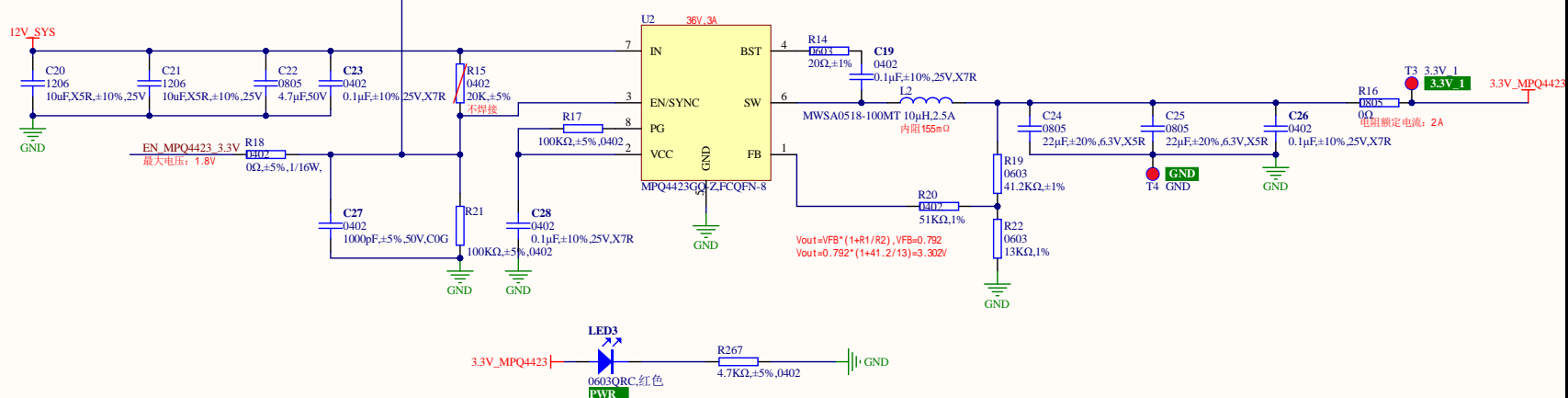
输入直流电压: 9-24V, 推荐12V/2A



(2-2) 12V转系统5V电路

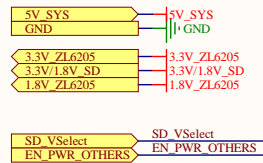


(2-3) 12V转系统3.3V电路

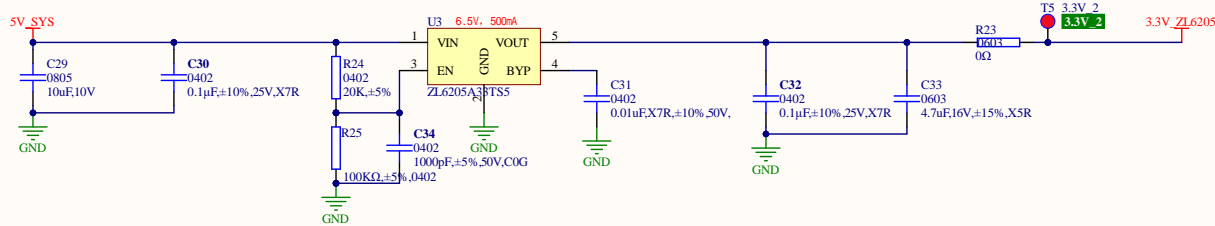


#	修改日期	修改内容
1		
2		
3		

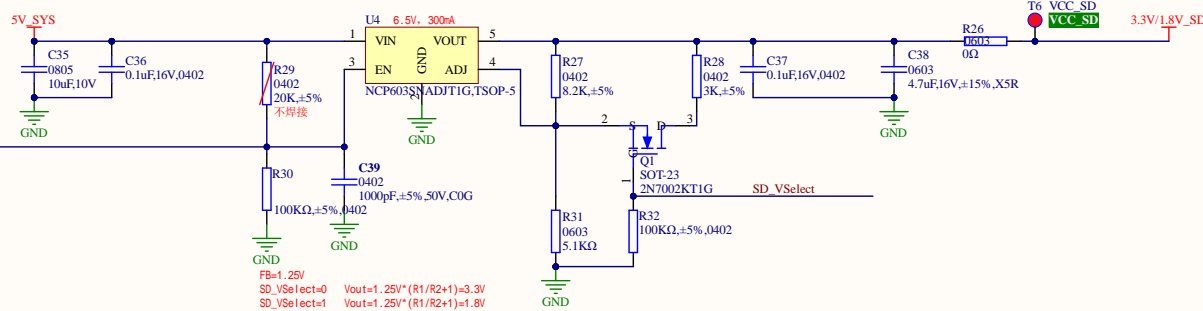
3.<图纸名称>



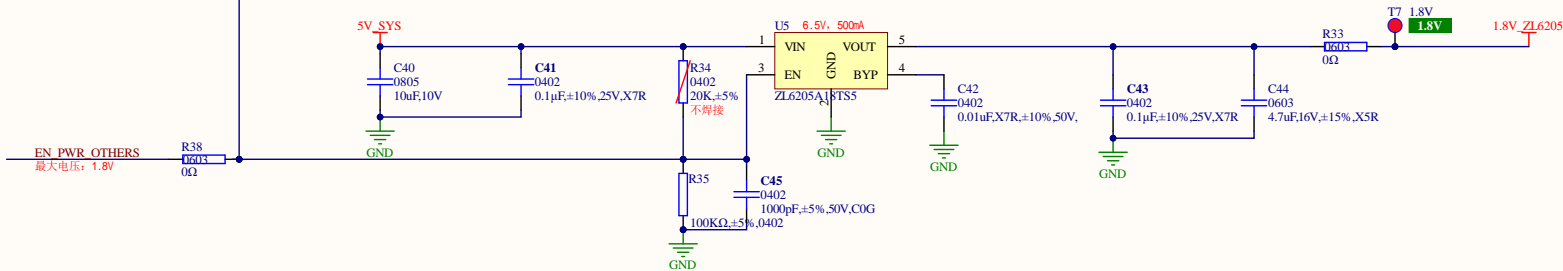
(3-1) 3.3V LDO FOR SNVS Domain



(3-2) 3.3V LDO FOR SD1 Domain



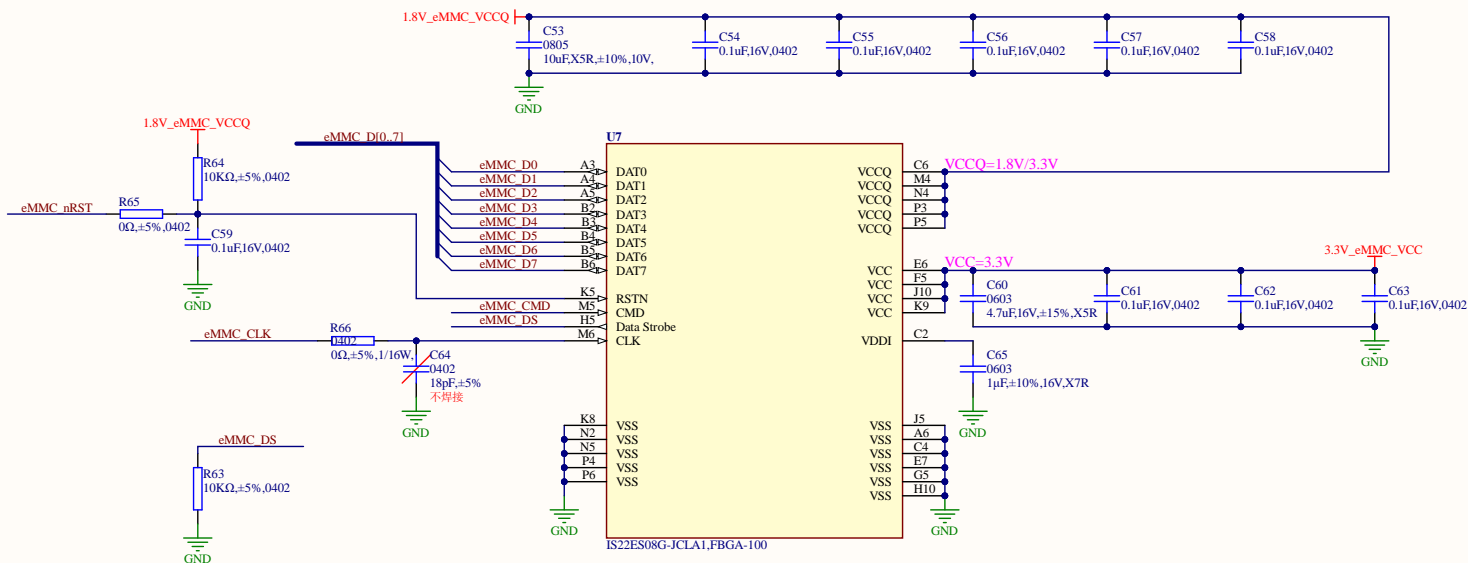
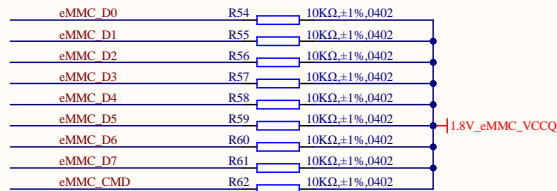
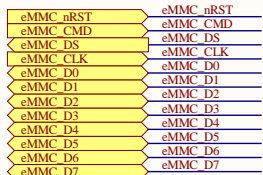
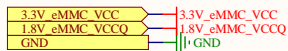
(3-3) 1.8V LDO FOR DISP1 Domain、SD2 Domain AND Others



#	修改日期	修改内容
1		
2		
3		

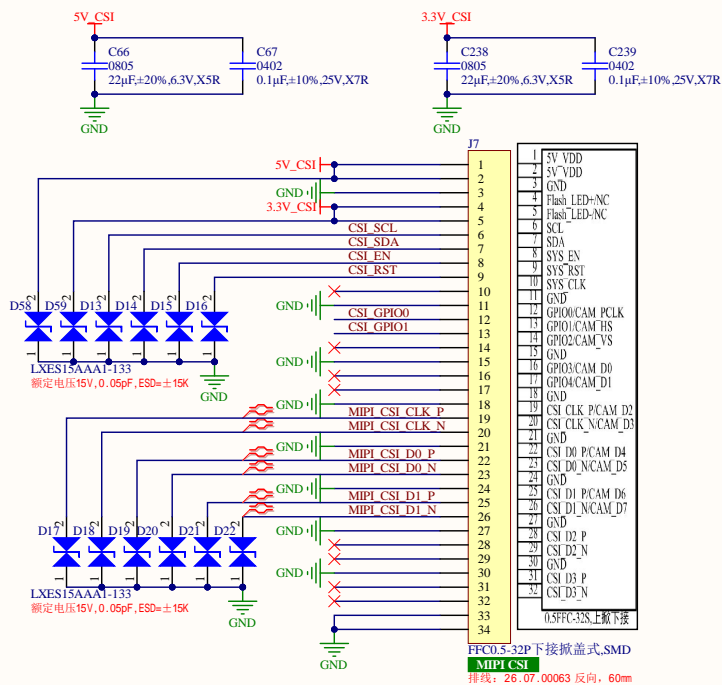
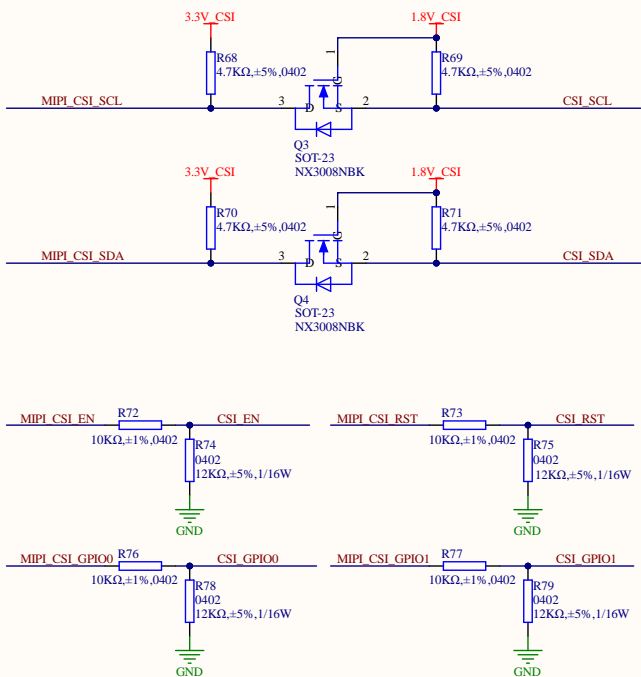
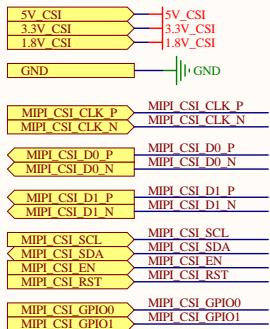
5.<图纸名称>

(5-1) eMMC-8G



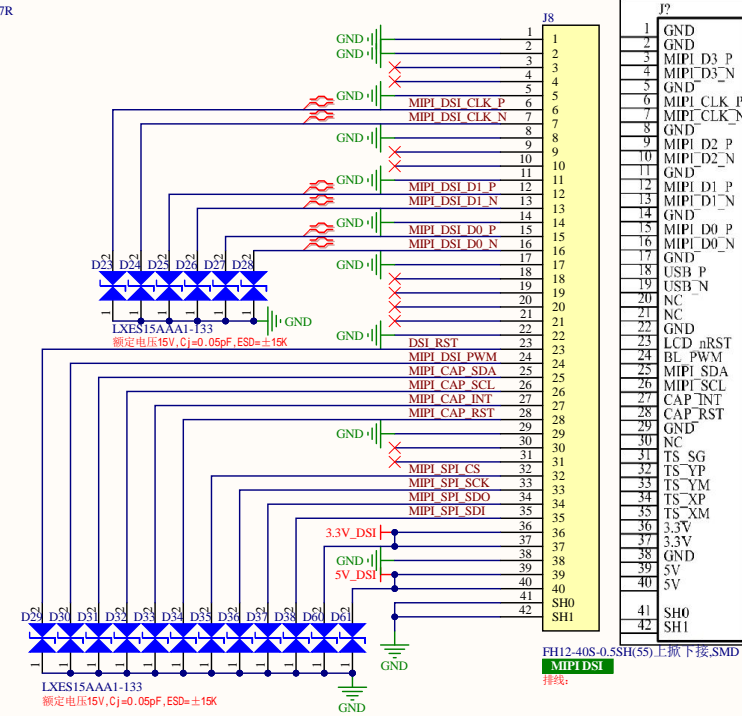
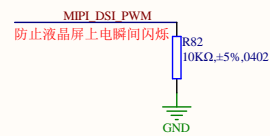
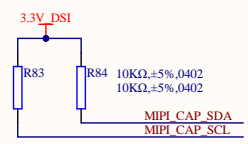
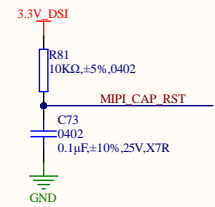
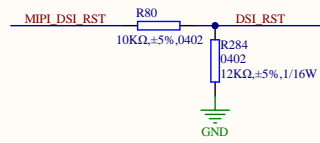
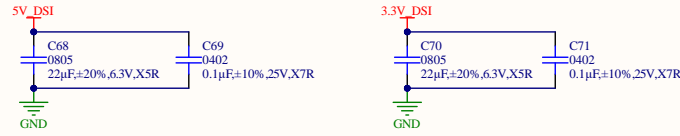
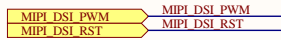
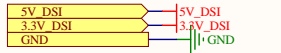
#	修改日期	修改内容
1		
2		
3		

(6-1) MIPI CSI



#	修改日期	修改内容
1		
2		
3		

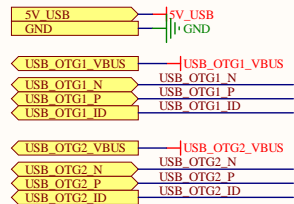
(7-1) MIPI DSI



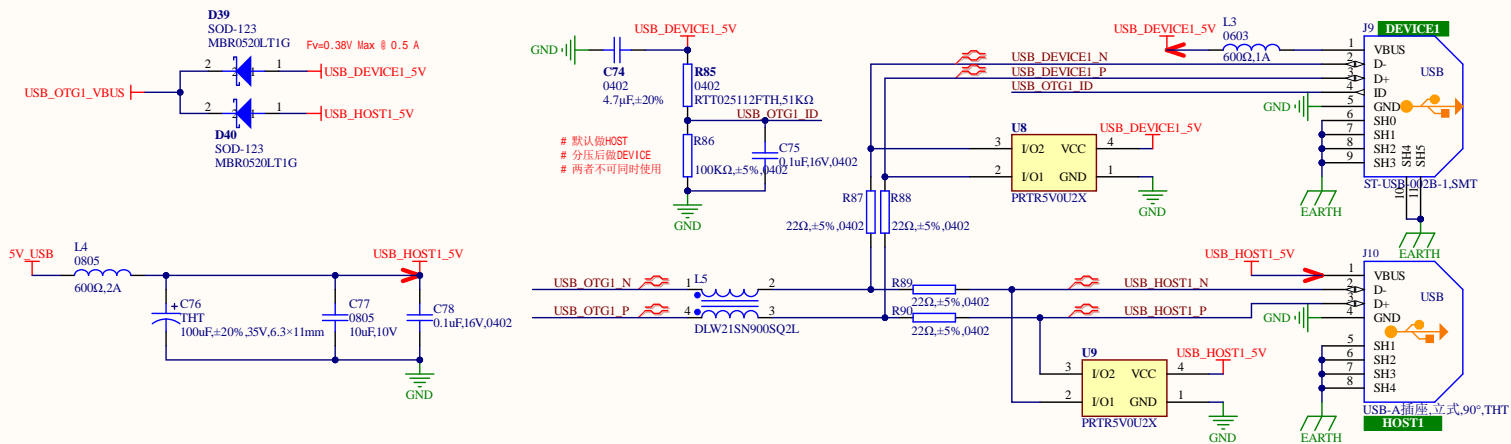
FH12-40S-0.5SH(35)上取下接SMD
MIPI DSI
排线:

#	修改日期	修改内容
1		
2		
3		

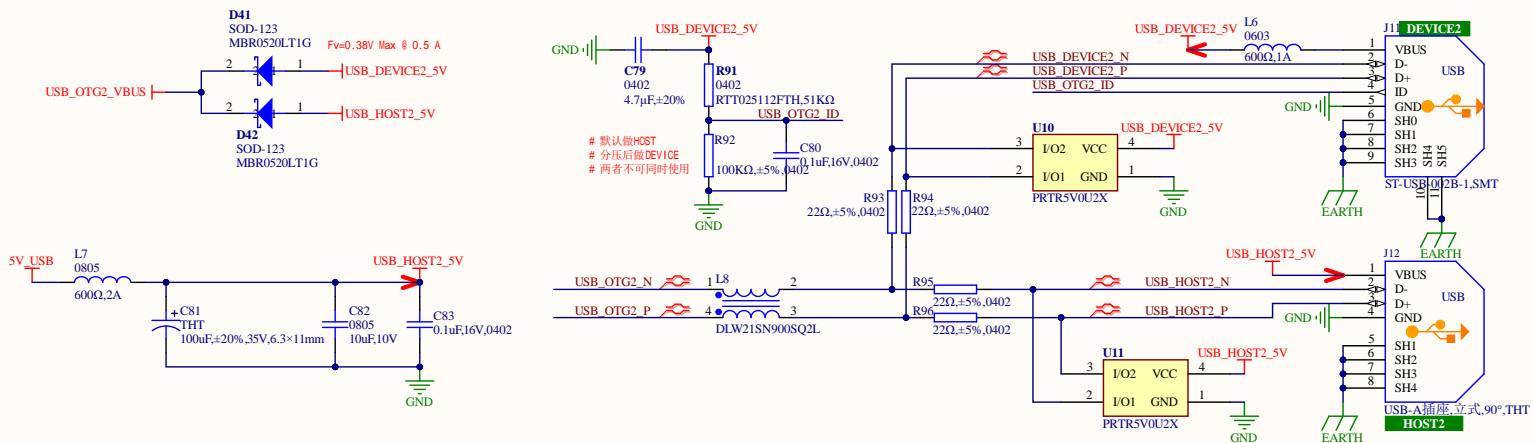
8.<图纸名称>



(8-1) USB_OTG1

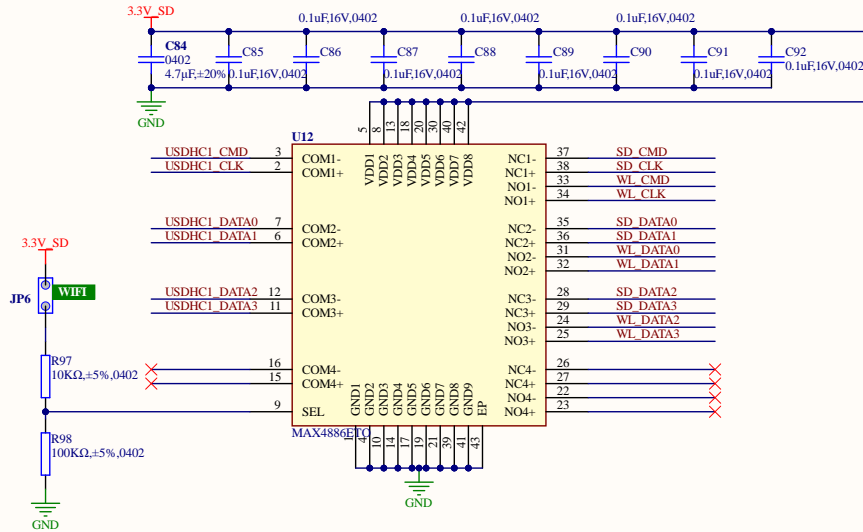
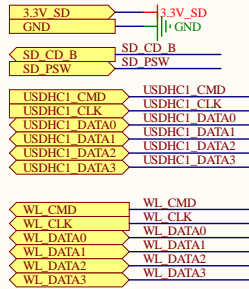


(8-2) USB_OTG2



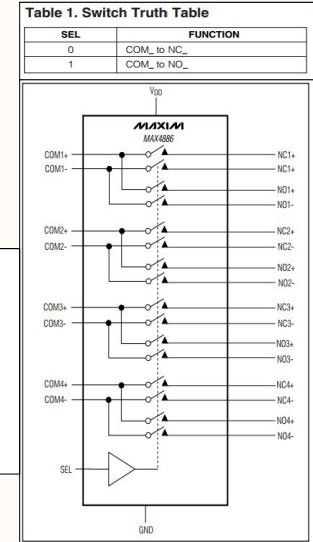
#	修改日期	修改内容
1		
2		
3		

(9-1) USDHC Switch

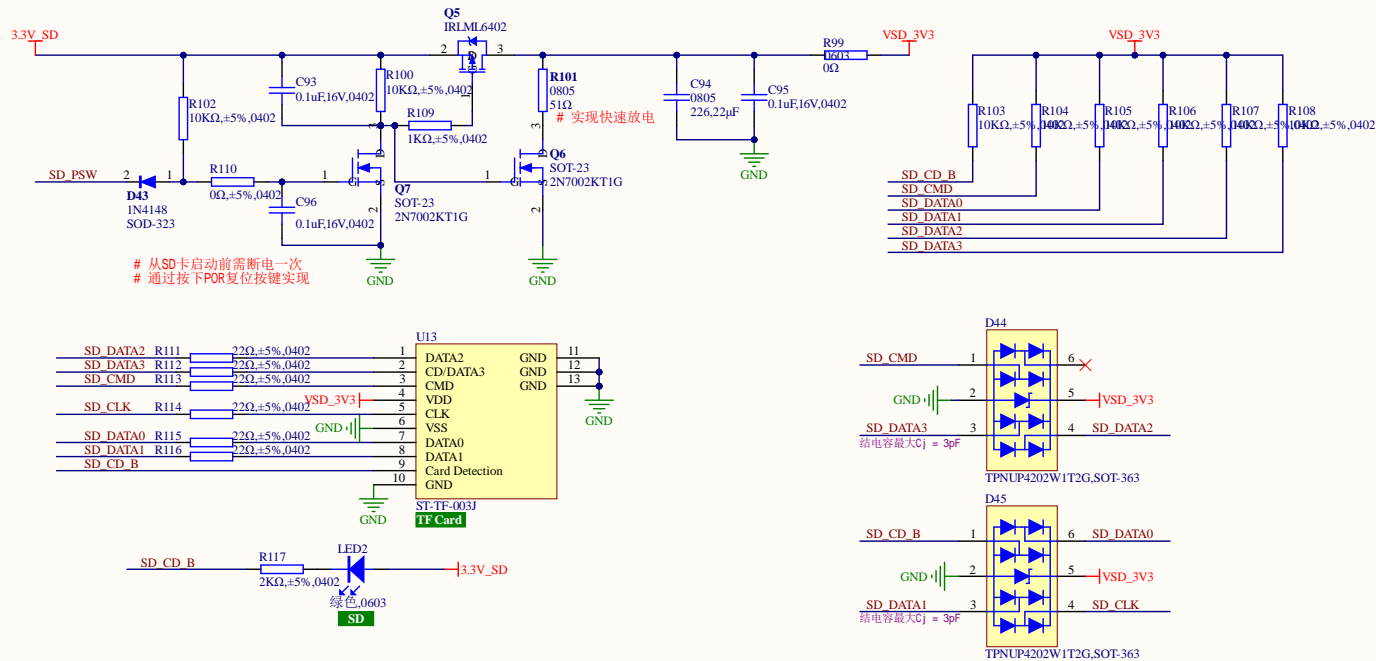


NOTE:
 1、多路复用器功能框图如右图所示。
 2、多路复用器真值表如右图所示。
 3、多路复用器细节参数如下图所示。
 4、此处SD卡和WIFI使用同一路总线，为保持走线不交叉，使用此开关

- ◆ Single +3.0V to +3.6V Power Supply
- ◆ Low On-Resistance (RON): 8Ω (typ)
- ◆ Low On-Capacitance (CON): 2.5pF (typ)
- ◆ Low Skew: 20ps (typ)
- ◆ 700μA Low Supply Current
- ◆ 2.6GHz (typ) Ultra-High Bandwidth
- ◆ 0.6dB (typ) Ultra-Low Insertion Loss
- ◆ High-Frequency Companion Device to MAX4929

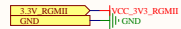


(9-2) SD_CARD

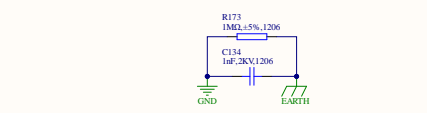
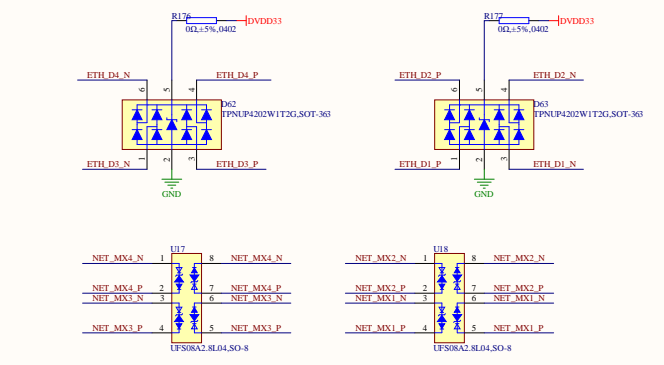
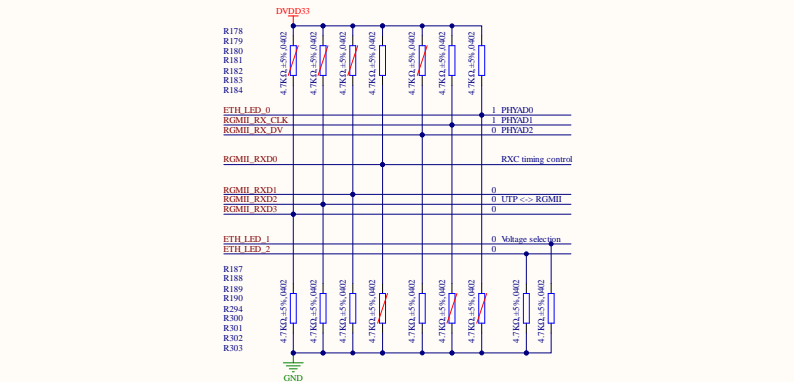
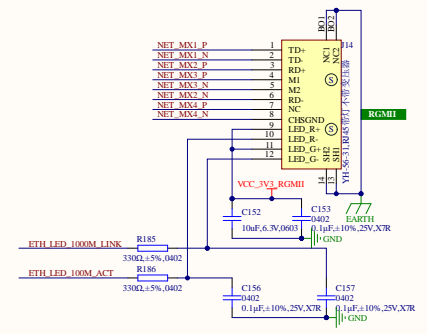
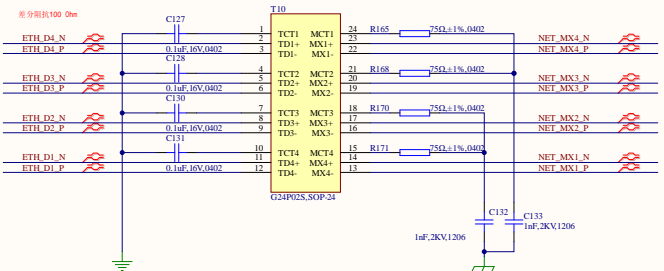
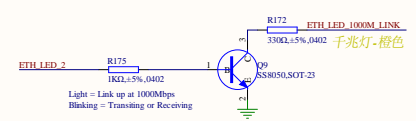
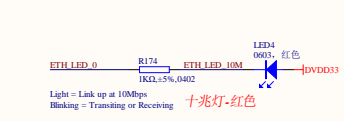
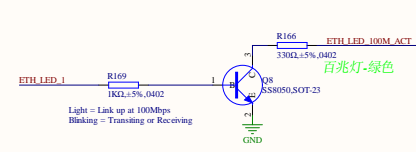
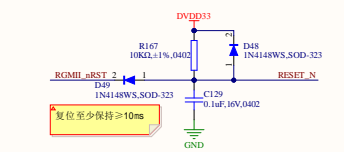
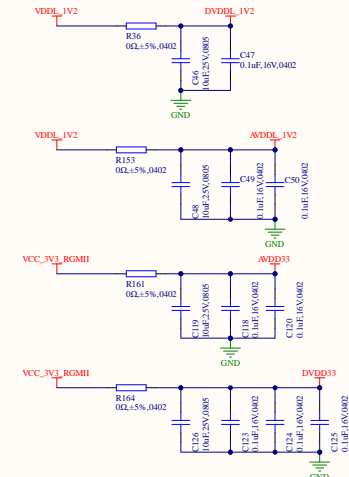
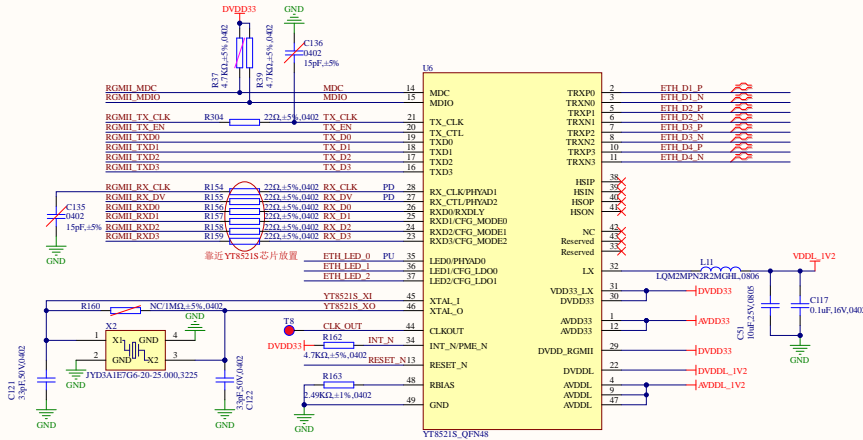


#	修改日期	修改内容
1		
2		
3		

11.<图纸名称>

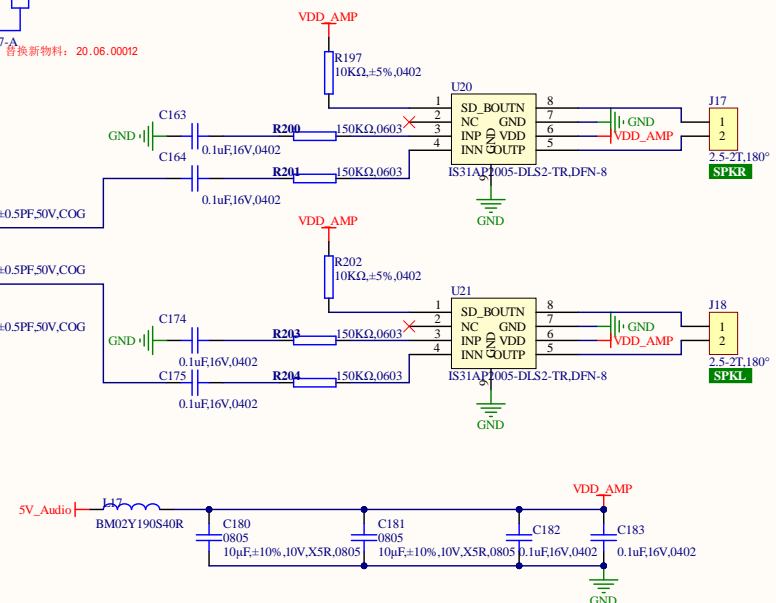
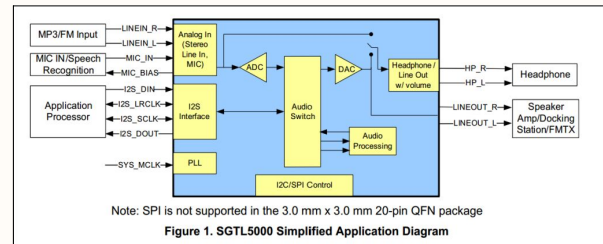
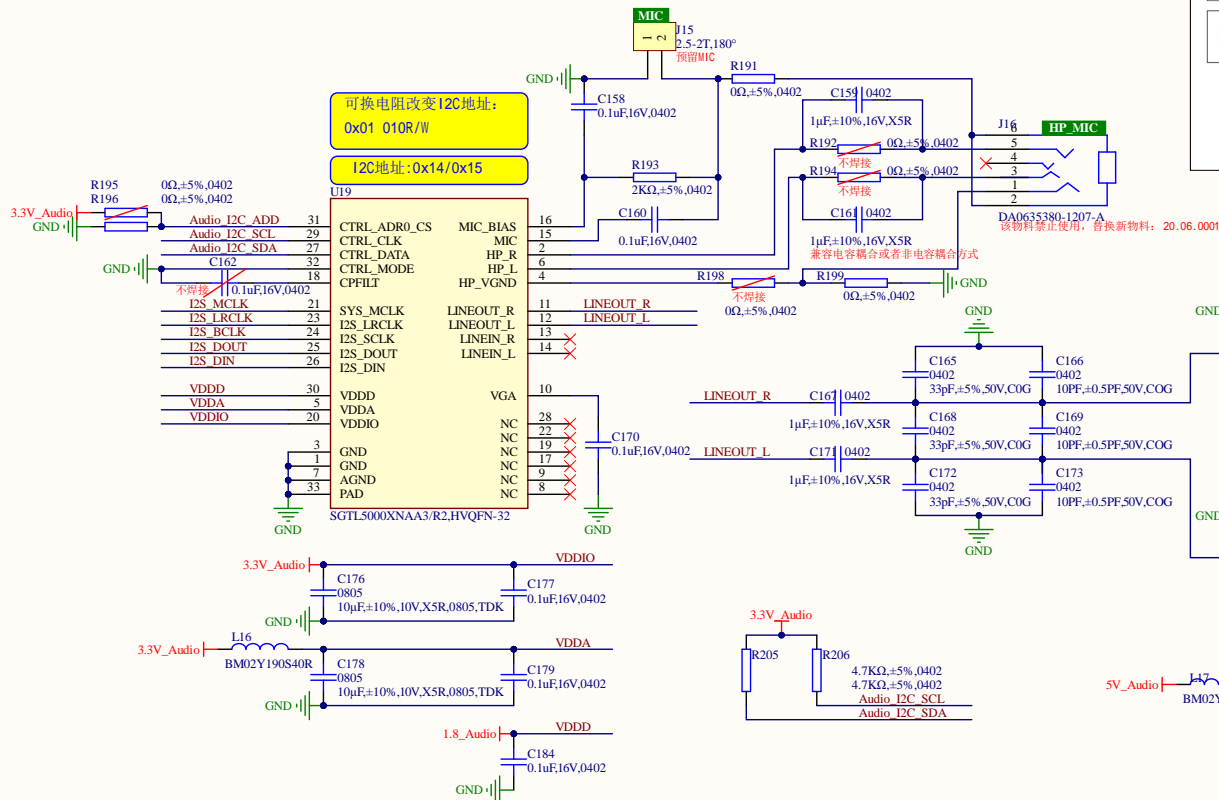
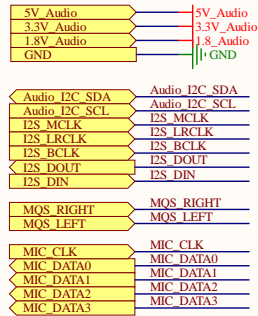


RGMI1_TXD0	RGMI1_TXD0
RGMI1_TXD1	RGMI1_TXD1
RGMI1_TXD2	RGMI1_TXD2
RGMI1_TXD3	RGMI1_TXD3
RGMI1_TXD4	RGMI1_TXD4
RGMI1_TXD5	RGMI1_TXD5
RGMI1_TXD6	RGMI1_TXD6
RGMI1_TXD7	RGMI1_TXD7
RGMI1_TXD8	RGMI1_TXD8
RGMI1_TXD9	RGMI1_TXD9
RGMI1_TXD10	RGMI1_TXD10
RGMI1_TXD11	RGMI1_TXD11
RGMI1_TXD12	RGMI1_TXD12
RGMI1_TXD13	RGMI1_TXD13
RGMI1_TXD14	RGMI1_TXD14
RGMI1_TXD15	RGMI1_TXD15
RGMI1_TXD16	RGMI1_TXD16
RGMI1_TXD17	RGMI1_TXD17
RGMI1_TXD18	RGMI1_TXD18
RGMI1_TXD19	RGMI1_TXD19
RGMI1_TXD20	RGMI1_TXD20
RGMI1_TXD21	RGMI1_TXD21
RGMI1_TXD22	RGMI1_TXD22
RGMI1_TXD23	RGMI1_TXD23
RGMI1_TXD24	RGMI1_TXD24
RGMI1_TXD25	RGMI1_TXD25
RGMI1_TXD26	RGMI1_TXD26
RGMI1_TXD27	RGMI1_TXD27
RGMI1_TXD28	RGMI1_TXD28
RGMI1_TXD29	RGMI1_TXD29
RGMI1_TXD30	RGMI1_TXD30
RGMI1_TXD31	RGMI1_TXD31
RGMI1_TXD32	RGMI1_TXD32
RGMI1_TXD33	RGMI1_TXD33
RGMI1_TXD34	RGMI1_TXD34
RGMI1_TXD35	RGMI1_TXD35
RGMI1_TXD36	RGMI1_TXD36
RGMI1_TXD37	RGMI1_TXD37
RGMI1_TXD38	RGMI1_TXD38
RGMI1_TXD39	RGMI1_TXD39
RGMI1_TXD40	RGMI1_TXD40
RGMI1_TXD41	RGMI1_TXD41
RGMI1_TXD42	RGMI1_TXD42
RGMI1_TXD43	RGMI1_TXD43
RGMI1_TXD44	RGMI1_TXD44
RGMI1_TXD45	RGMI1_TXD45
RGMI1_TXD46	RGMI1_TXD46
RGMI1_TXD47	RGMI1_TXD47
RGMI1_TXD48	RGMI1_TXD48
RGMI1_TXD49	RGMI1_TXD49
RGMI1_TXD50	RGMI1_TXD50
RGMI1_TXD51	RGMI1_TXD51
RGMI1_TXD52	RGMI1_TXD52
RGMI1_TXD53	RGMI1_TXD53
RGMI1_TXD54	RGMI1_TXD54
RGMI1_TXD55	RGMI1_TXD55
RGMI1_TXD56	RGMI1_TXD56
RGMI1_TXD57	RGMI1_TXD57
RGMI1_TXD58	RGMI1_TXD58
RGMI1_TXD59	RGMI1_TXD59
RGMI1_TXD60	RGMI1_TXD60
RGMI1_TXD61	RGMI1_TXD61
RGMI1_TXD62	RGMI1_TXD62
RGMI1_TXD63	RGMI1_TXD63
RGMI1_TXD64	RGMI1_TXD64
RGMI1_TXD65	RGMI1_TXD65
RGMI1_TXD66	RGMI1_TXD66
RGMI1_TXD67	RGMI1_TXD67
RGMI1_TXD68	RGMI1_TXD68
RGMI1_TXD69	RGMI1_TXD69
RGMI1_TXD70	RGMI1_TXD70
RGMI1_TXD71	RGMI1_TXD71
RGMI1_TXD72	RGMI1_TXD72
RGMI1_TXD73	RGMI1_TXD73
RGMI1_TXD74	RGMI1_TXD74
RGMI1_TXD75	RGMI1_TXD75
RGMI1_TXD76	RGMI1_TXD76
RGMI1_TXD77	RGMI1_TXD77
RGMI1_TXD78	RGMI1_TXD78
RGMI1_TXD79	RGMI1_TXD79
RGMI1_TXD80	RGMI1_TXD80
RGMI1_TXD81	RGMI1_TXD81
RGMI1_TXD82	RGMI1_TXD82
RGMI1_TXD83	RGMI1_TXD83
RGMI1_TXD84	RGMI1_TXD84
RGMI1_TXD85	RGMI1_TXD85
RGMI1_TXD86	RGMI1_TXD86
RGMI1_TXD87	RGMI1_TXD87
RGMI1_TXD88	RGMI1_TXD88
RGMI1_TXD89	RGMI1_TXD89
RGMI1_TXD90	RGMI1_TXD90
RGMI1_TXD91	RGMI1_TXD91
RGMI1_TXD92	RGMI1_TXD92
RGMI1_TXD93	RGMI1_TXD93
RGMI1_TXD94	RGMI1_TXD94
RGMI1_TXD95	RGMI1_TXD95
RGMI1_TXD96	RGMI1_TXD96
RGMI1_TXD97	RGMI1_TXD97
RGMI1_TXD98	RGMI1_TXD98
RGMI1_TXD99	RGMI1_TXD99
RGMI1_TXD100	RGMI1_TXD100

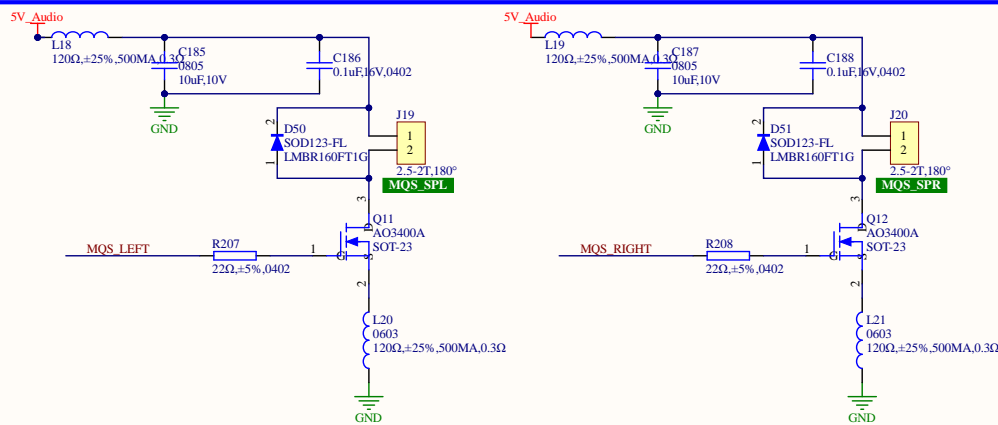


#	修改日期	修改内容
1		
2		
3		

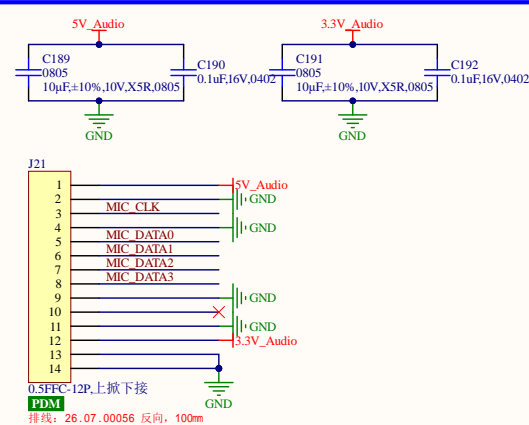
(12-1) SAI/I2S



(12-2) MQS



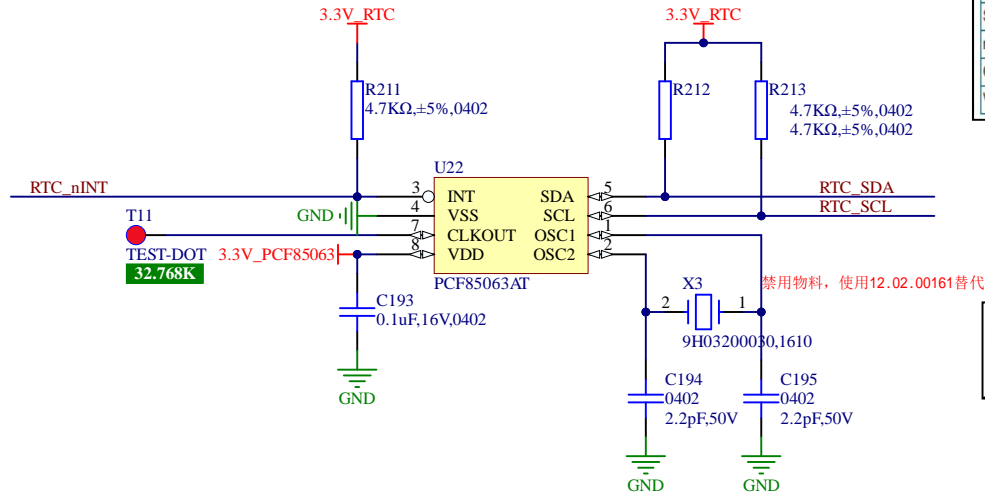
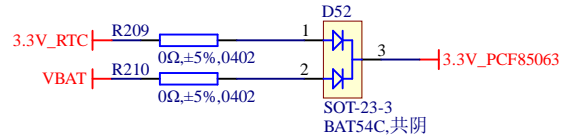
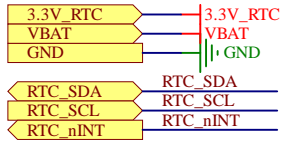
(12-3) PDM



#	修改日期	修改内容
1		
2		
3		

13.RTC_PCF85063

(13-1) RTC PCF85063



NOTE:
1、PCF85063的nINT引脚为开漏输出，外部需要加上拉。

Table 4. Pin description
Input or input/output pins must always be at a defined level (V_{SS} or V_{DD}) unless otherwise specified.

Symbol	Pin	PCF85063			Type	Description
		PCF85063AT	PCF85063ATL	PCF85063ATT		
OSCI	1	1	1	input	oscillator input	
OSCO	2	2	2	output	oscillator output	
CLKOE	-	3	-	input	CLKOUT enable or disable pin; enable is active HIGH	
INT	3	4	3	output	interrupt output (open-drain)	
VSS	4	5	4	supply	ground supply voltage	
SDA	5	6	5	input/output	serial data line	
SCL	6	7	6	input	serial clock input	
n.c.	-	8	-	-	not connected	
CLKOUT	7	9	7	output	clock output (push-pull)	
VDD	8	10	8	supply	supply voltage	

NOTE:
1、PCF85063内部集成晶体负载电容，且软件可依据外部晶体负载需求大小进行配置。
2、在此电路中建议软件配置负载电容大小为12.5pF。
3、在外部继续加电容目的为微调，使得晶体频率更准。

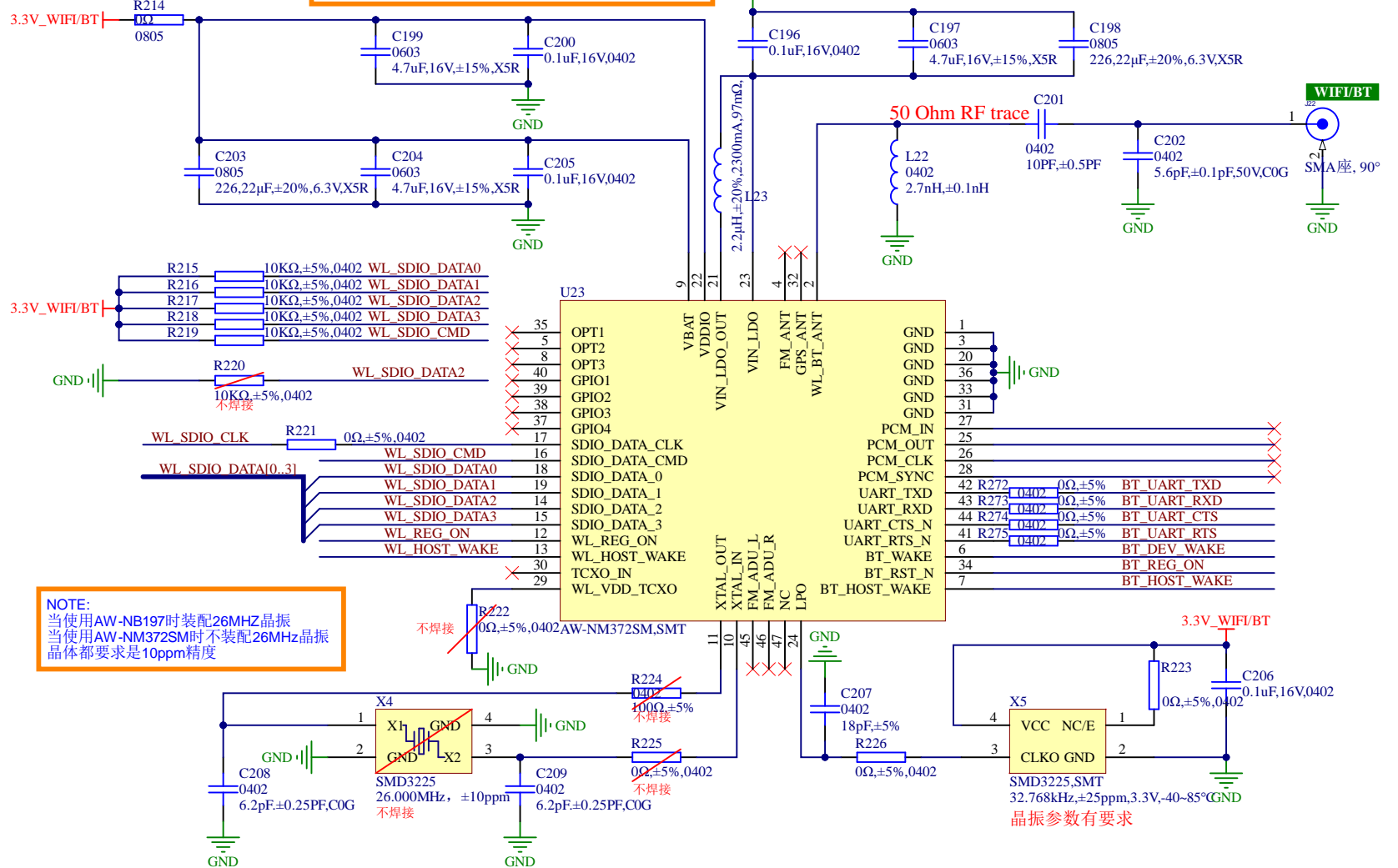
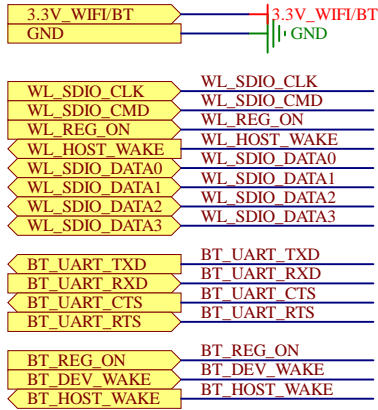
$C_L(\text{req})$	integrated load capacitance	on pins OSCO, OSC1			
	$C_L = 7 \text{ pF}$	4.2	7	9.8	pF
	$C_L = 12.5 \text{ pF}$	7.5	12.5	17.5	pF

#	修改日期	修改内容
1		
2		
3		

14.WIFI_BT_AM_NM372SM

(14-1) WIFI BT

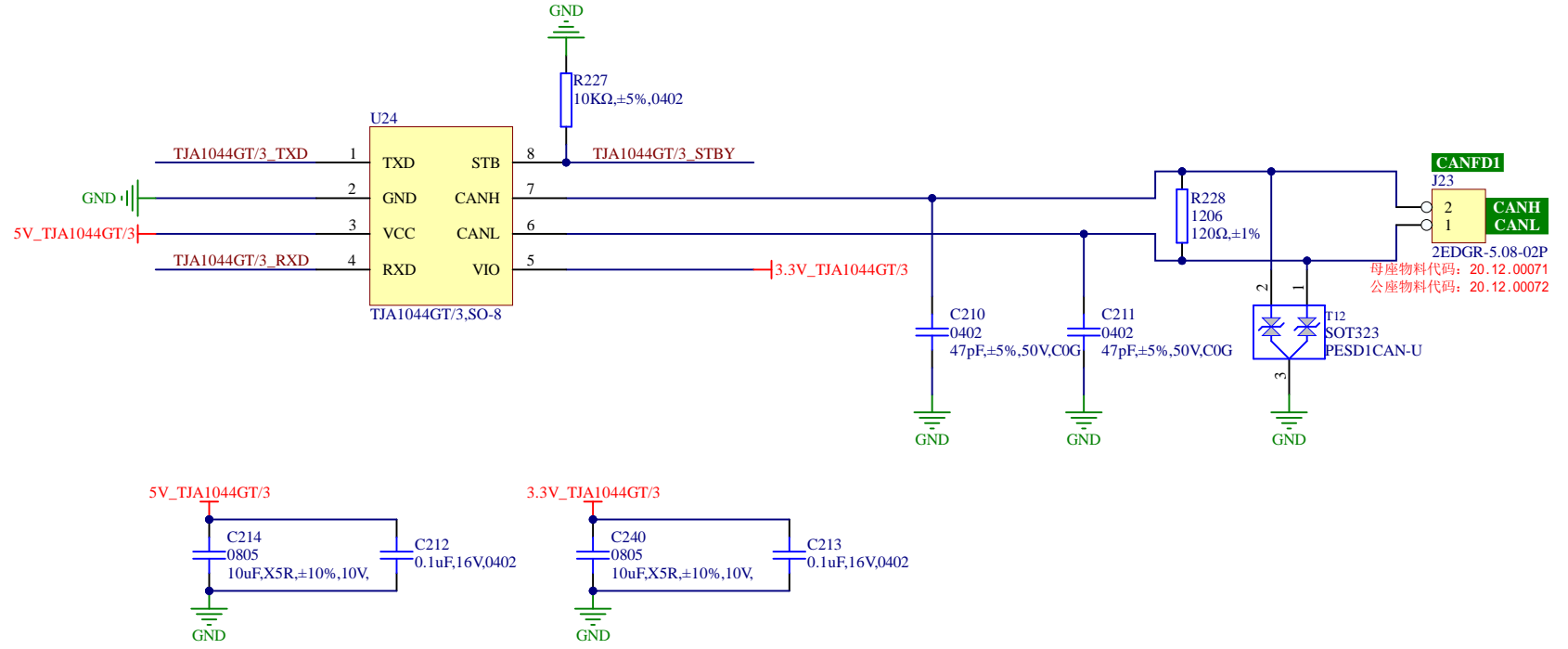
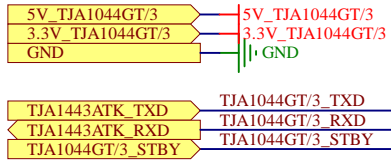
NOTE:
VBAT电压范围3.0V-4.8V,供电电流需要大于等于400mA



#	修改日期	修改内容
1		
2		
3		

15.<图纸名称>

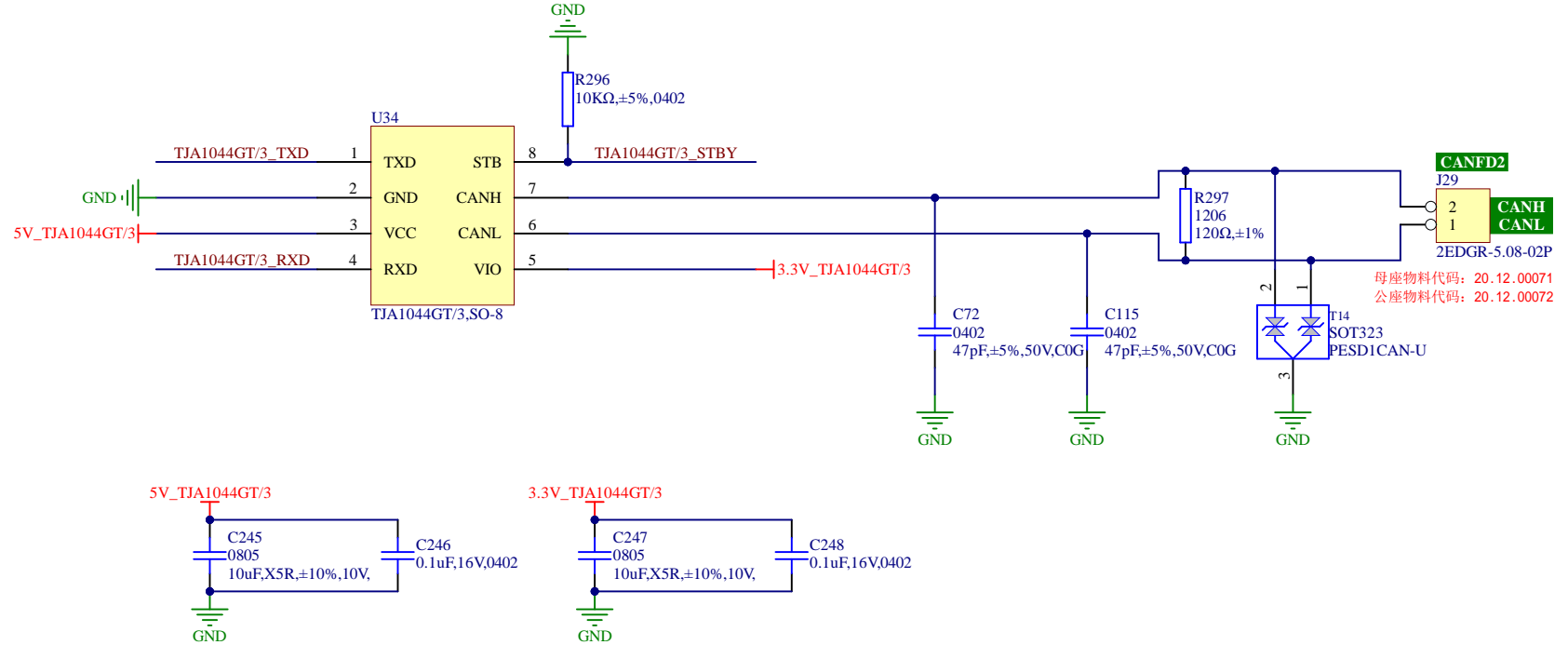
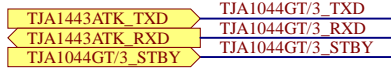
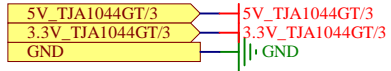
(15-1) CANFD1 TJA1044GT/3



#	修改日期	修改内容
1		
2		
3		

16.<图纸名称>

(16-1) CANFD2 TJA1044GT/3

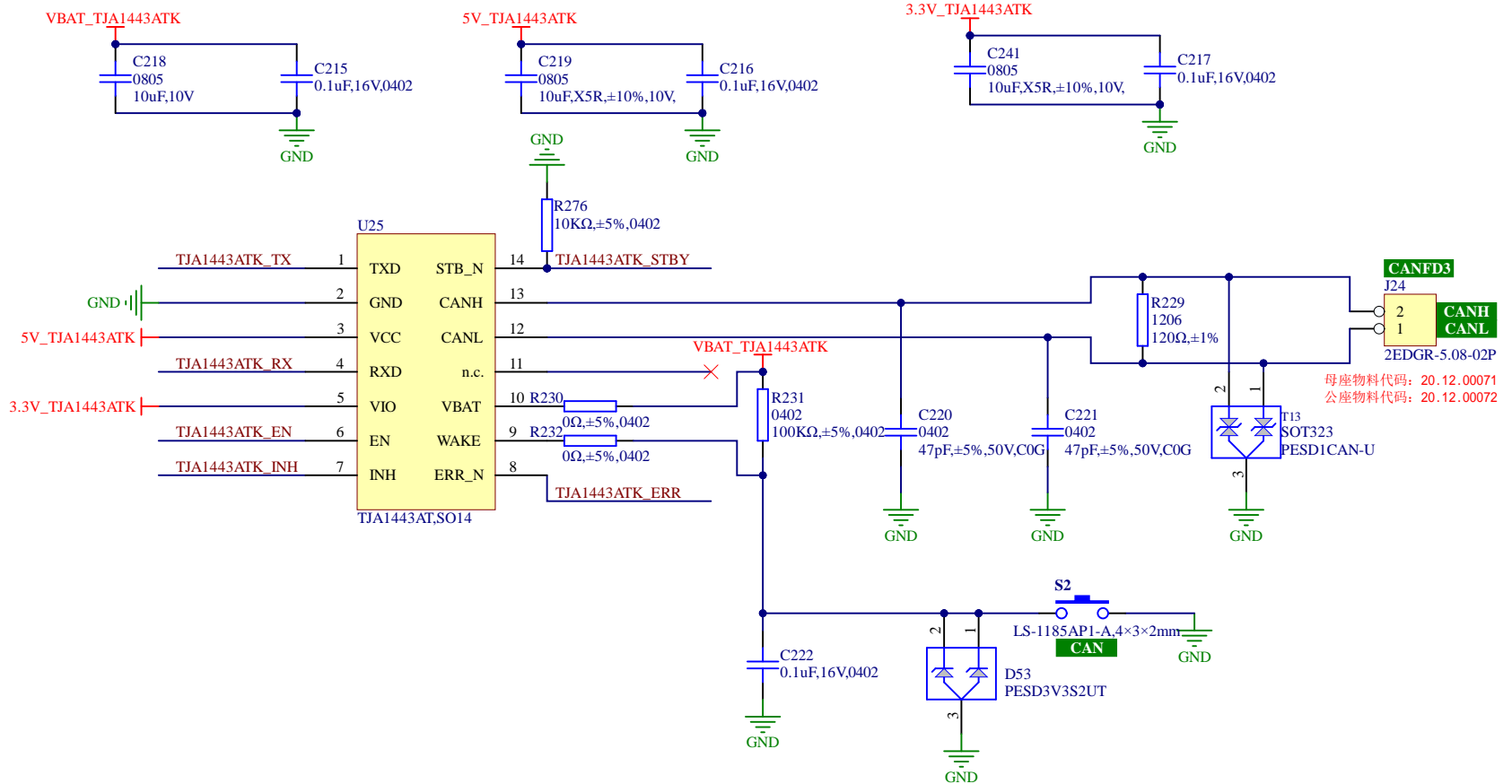
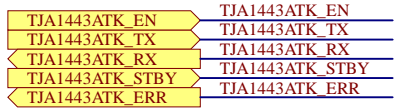
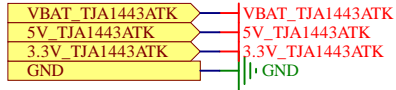


母座物料代码: 20.12.00071
公座物料代码: 20.12.00072

#	修改日期	修改内容
1		
2		
3		

17.<图纸名称>

(17-1) CANFD3 TJA1443

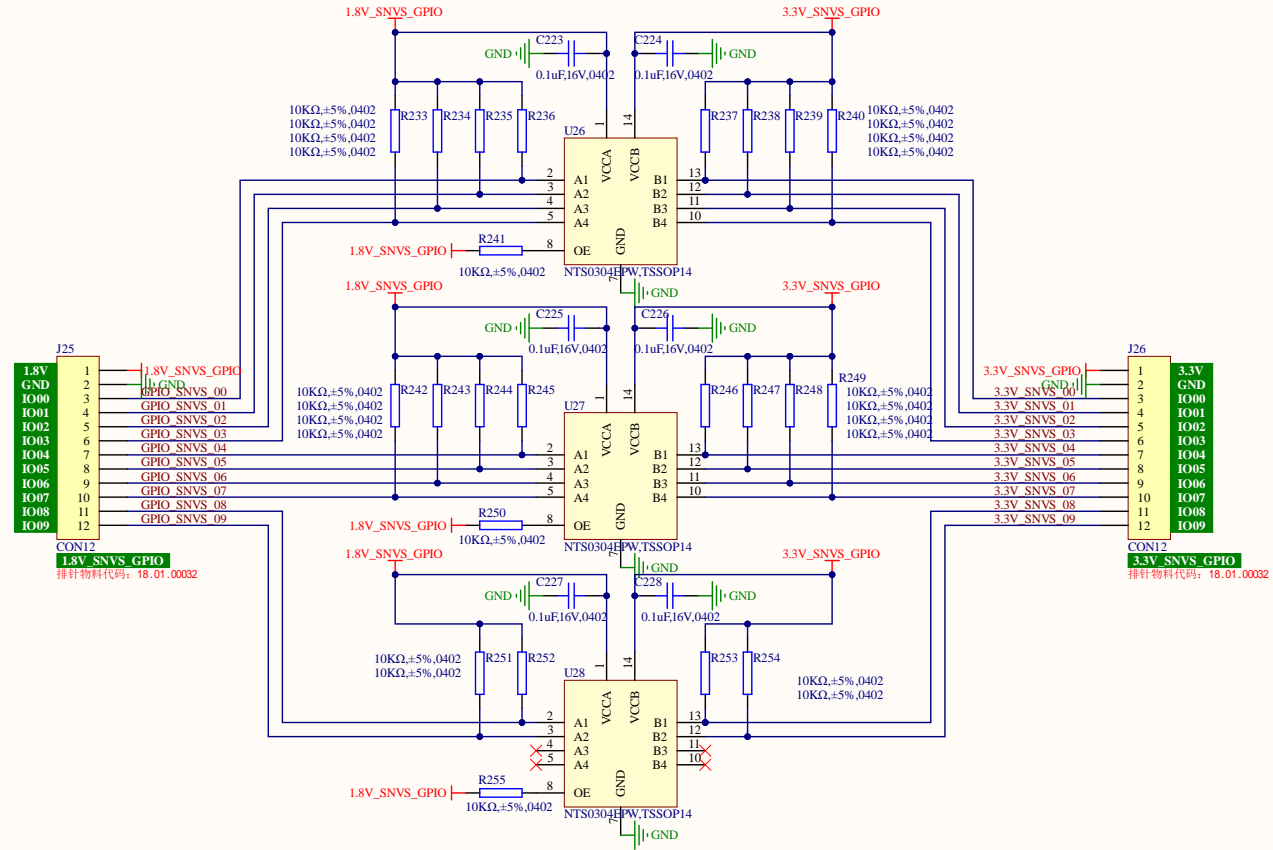
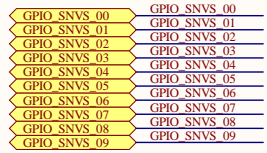


#	修改日期	修改内容
1		
2		
3		

立功科技

设计人员	<设计人员>	设计日期	<设计日期>	图纸名称	<图纸名称>	图纸描述	<图纸描述>		
审核人员	<审核日期>	审核日期	<审核人员>	产品名称		产品型号			
							图纸版本	<图纸版本>第 17 张 / 共 21 张	A4

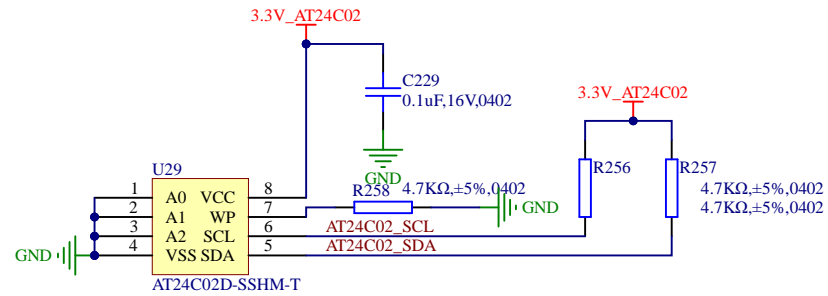
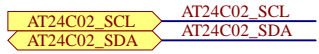
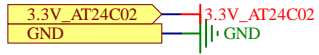
(18-1) SNVS GPIO



#	修改日期	修改内容
1		
2		
3		

19.<图纸名称>

(19-1) E2PROM AT24C02



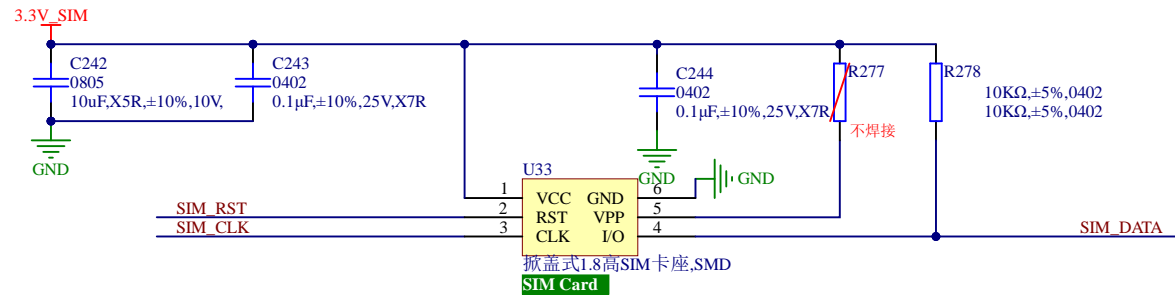
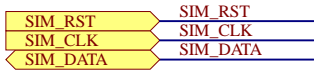
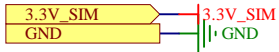
#	修改日期	修改内容
1		
2		
3		

立功科技

设计人员	<设计人员>	设计日期	<设计日期>	图纸名称	<图纸名称>	图纸描述	<图纸描述>
审核人员	<审核日期>	审核日期	<审核人员>	产品名称		产品型号	图纸版本 <图纸版本>第 19 张 / 共 21 张 A4

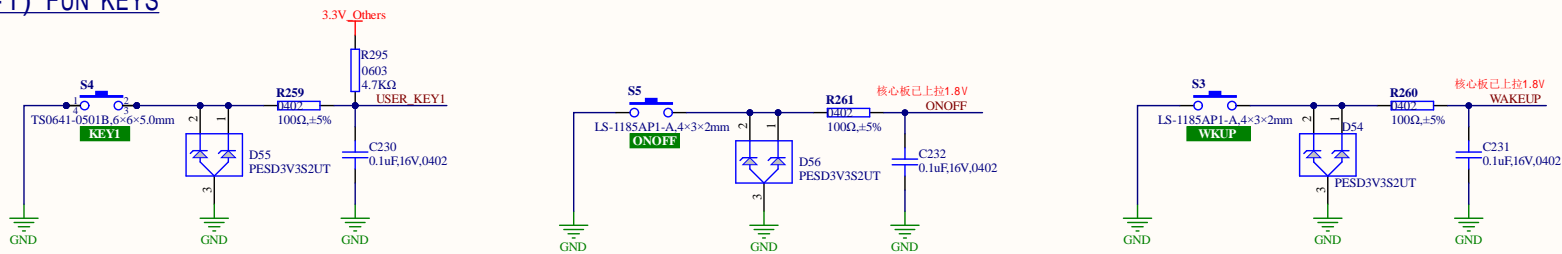
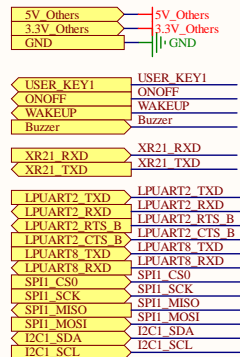
20.<图纸名称>

(20-1) SIM CARD

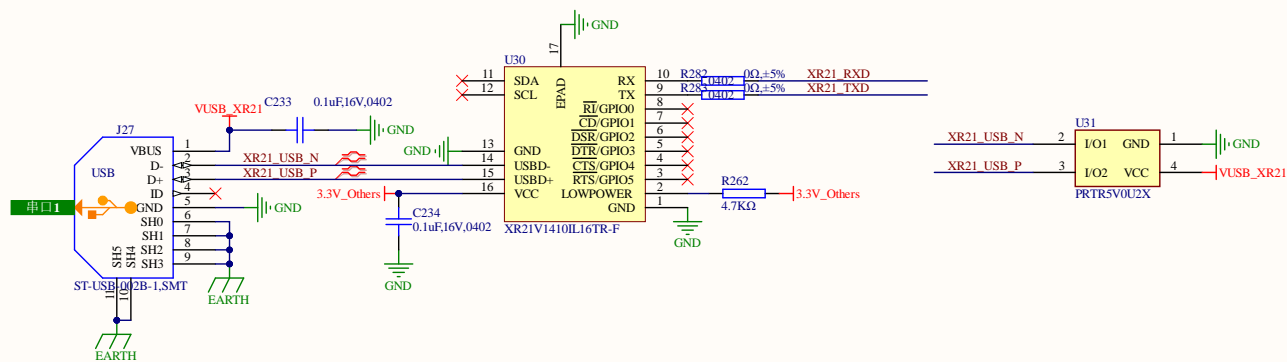


#	修改日期	修改内容
1		
2		
3		

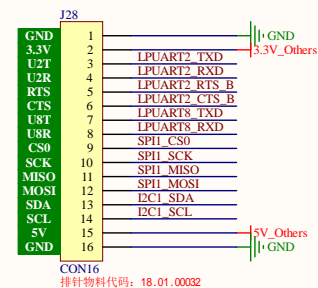
(21-1) FUN KEYS



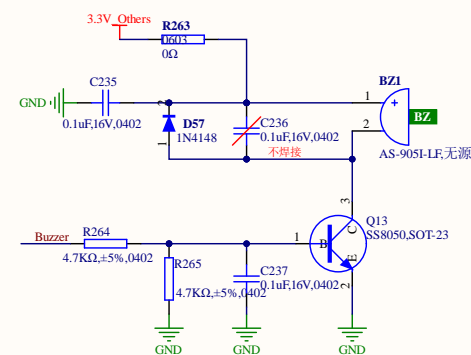
(21-2) USB-TTL



(21-3) 预留接口



(21-4) BEEP



#	修改日期	修改内容
1		
2		
3		